

CONSTRUCTION UPDATE

November 2023

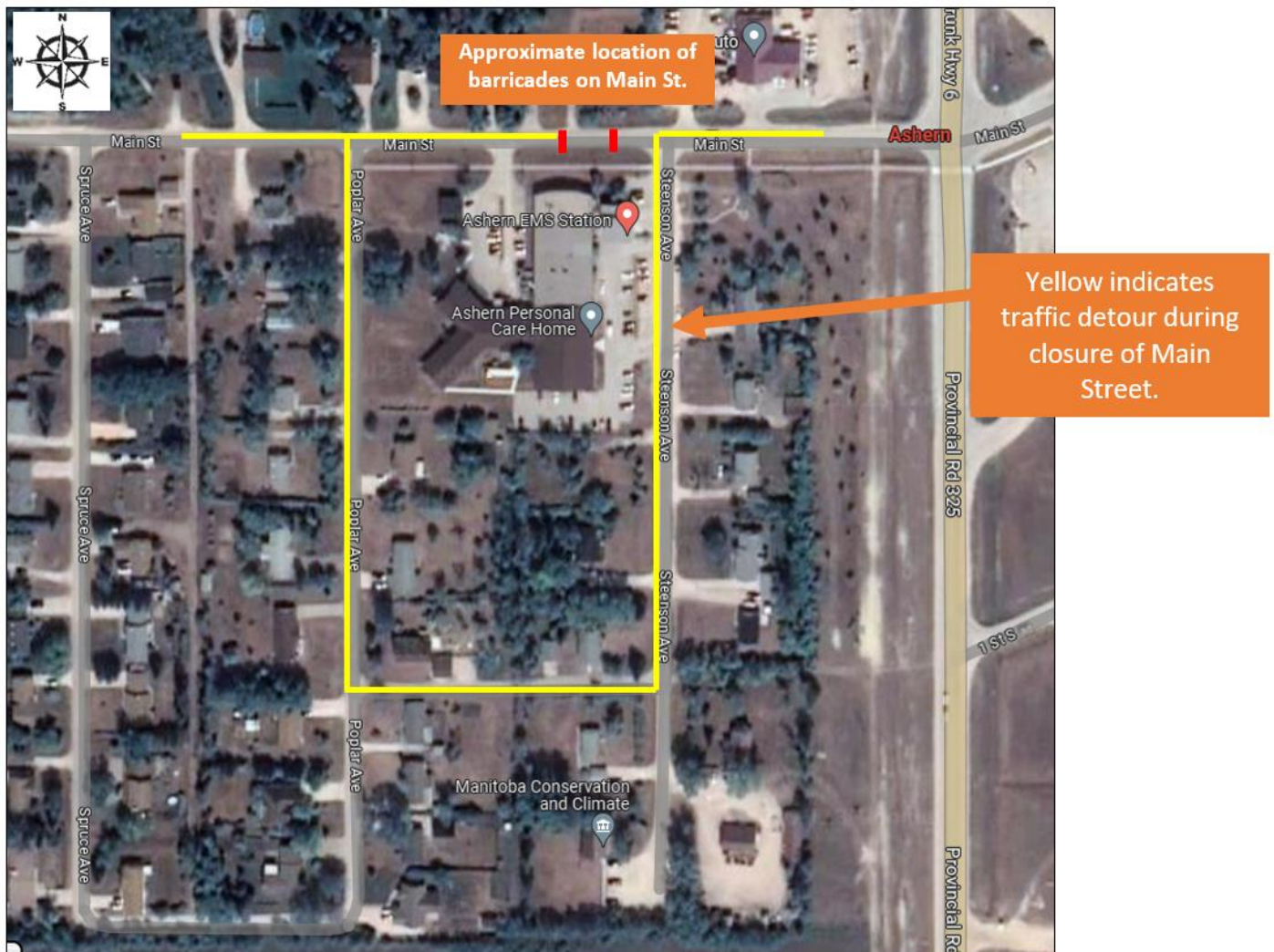
Ashern's Lakeshore General Hospital

New Cistern added for hospital expansion

The new cistern for Ashern Lakeshore General Hospital is to be installed in the ground on December 5. The cistern is a crucial piece of Fire Life Safety equipment that will contain water for the sprinkler system that is used in case of fire in the facility.

Main Street between Steenson Ave and Poplar Ave Closed November 27-30

As part of this work, from November 27 to 30 the contractor needs to excavate down to the waterline – resulting in a roadway closure on Main Street. Residents from Poplar Ave. and Spruce Ave. will be able to access their streets via Steenson Ave. and back lane that connects to Poplar Ave. and Spruce Ave. Ambulance and public access to the hospital will not be affected. Signage and flag persons will be onsite to direct traffic appropriately, including ambulances.



Planned water shutdown

On November 29 starting at 6:00 p.m. workers are attaching new water line with valve for cistern to the main water line resulting in a planned water shutdown for residents surrounding the hospital. After completion, a boil water advisory for the immediate area surrounding the hospital will be in place until tests come back negative for all contaminants and can be assured of water quality (up to 16 days). More information will be shared with affected residents through in person notices.

Road Closure on December 5 for the cistern to be installed

On December 5, the cistern will be placed in the ground by crane. As a result, Steenson Ave. will not be accessible from Main Street. Public and ambulance traffic going to and from hospital and surrounding area will be rerouted south down Steenson Ave. onto the back lane and up to Poplar Ave. then onto Main Street. Ambulances will be prioritized.



Parking

Parking for the public is located closest to the facility entrances. Staff and members of the public are being asked to not park on roadways surrounding the hospital for the duration of detours to ease the travel of ambulances during emergencies.

